



R.L. TRAVERS & ASSOCIATES, INC.



Springwood Shopping Center
82,220 SF
Prince William County



Fullerton Industrial Park
95,000 SF
Fairfax County



Burke Village Shopping Center
85,700 SF
Fairfax County



Newington Professional Building
23,636 SF
Fairfax County



Backlick Center South Phase II
220,656 SF
Fairfax County



Burke Village Center II
28,610 SF
Fairfax County

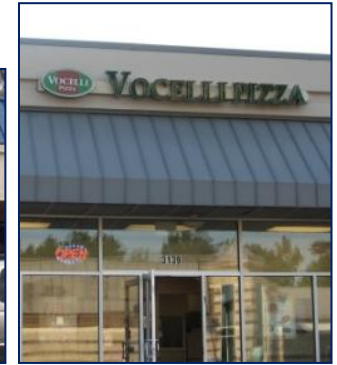
**REAL ESTATE
LAND DEVELOPMENT
PROPERTY MANAGEMENT**

Established 1963

SERVICES

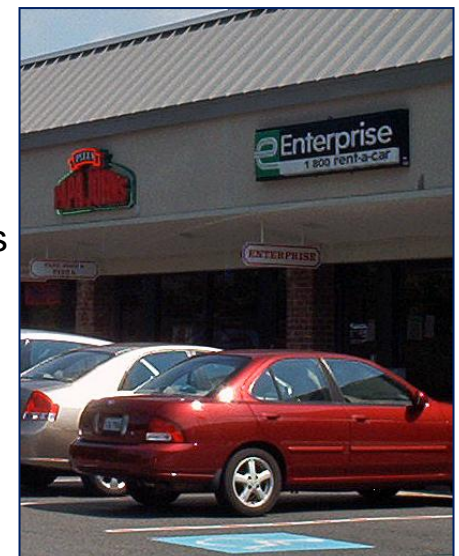
We provide a full range of services to our clients, investors, lending institutions, trustees' loan services, and bankruptcy professionals, including:

- Results Driven Property Management Services
- Marketing & Leasing
- Development & Redevelopment / Project / Construction Management
- Asset Management / Asset Sales & Investment Services
- Commercial Brokerage
- Full Receivership Services
- Redevelopment / Repositioning
- Acquisition / Disposition Services
- Debt / Equity Sourcing
- Valuation & Advisory Services



Properties We Serve:

- Mixed-Use Projects - Town Centers, Retail / Office / Multi-Family
- Retail - Strip Malls and Anchored Centers
- Industrial - Business Parks, R&D, Distribution, Land
- Office - High-Rise, Mid-Rise and Garden
- Medical - Office, Clinic and Lab
- Corporate, Military, and Government Facilities



EXPERIENCE

R. L. Travers & Associates, Inc. is a comprehensive commercial real estate services company, headquartered in Northern Virginia, and has been involved in commercial property management and development throughout the Alexandria, Arlington, Fairfax, Falls Church, Manassas and Prince William areas, within the Washington DC metropolitan commercial real estate market since 1963.

What sets the R. L. Travers & Associates, Inc. apart? Nearly 50 years of experience in Commercial Real Estate Development, Management, Leasing and Asset Management, Results-Oriented Management & Leasing, Seasoned Leadership in Northern Virginia, Financially Stable, and as both owners and developers of commercial properties in Northern Virginia, we operate with an owner's mindset; and there is no substitute for experience.



R.L. TRAVERS & ASSOCIATES, INC.

**Post Office Box 686
Springfield, Virginia 22150**

P: 703.339.0100

F: 703.550.8815

www.rltinc.net